

**CTSD / Cathepsin D Antibody (clone 3F12-1B9)**  
**Mouse Monoclonal Antibody**  
**Catalog # ALS14362****Specification**

---

**CTSD / Cathepsin D Antibody (clone 3F12-1B9) - Product Information**

|                   |   |
|-------------------|---|
| Application       | WB, IHC-P, E, IP                              |
| Primary Accession | <a href="#">P07339</a>                        |
| Reactivity        | Human   |
| Host              | Mouse   |
| Clonality         | Monoclonal                                    |
| Calculated MW     | 45kDa KDa                                     |
| Dilution          | WB~~1:1000<br>IHC-P~~N/A<br>E~~N/A<br>IP~~N/A |

**CTSD / Cathepsin D Antibody (clone 3F12-1B9) - Additional Information****Gene ID** 1509**Other Names**

Cathepsin D, 3.4.23.5, Cathepsin D light chain, Cathepsin D heavy chain, CTSD, CPSD

**Target/Specificity**

Human Cathepsin D

**Reconstitution & Storage**

Aliquot and store at -20°C or -80°C. Avoid freeze-thaw cycles.

**Precautions**

CTSD / Cathepsin D Antibody (clone 3F12-1B9) is for research use only and not for use in diagnostic or therapeutic procedures.

**CTSD / Cathepsin D Antibody (clone 3F12-1B9) - Protein Information****Name** CTSD**Synonyms** CPSD**Function**

Acid protease active in intracellular protein breakdown. Plays a role in APP processing following cleavage and activation by ADAM30 which leads to APP degradation (PubMed:<a href="http://www.uniprot.org/citations/27333034" target="\_blank">27333034</a>). Involved in the pathogenesis of several diseases such as breast cancer and possibly Alzheimer disease.

**Cellular Location**

Lysosome. Melanosome. Secreted, extracellular space. Note=Identified by mass spectrometry in

melanosome fractions from stage I to stage IV. In aortic samples, detected as an extracellular protein loosely bound to the matrix (PubMed:20551380)

#### **Tissue Location**

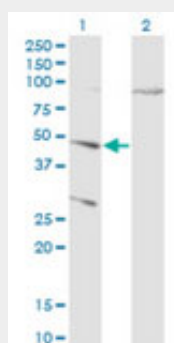
Expressed in the aorta extracellular space (at protein level) (PubMed:20551380). Expressed in liver (at protein level) (PubMed:1426530).

#### **CTSD / Cathepsin D Antibody (clone 3F12-1B9) - Protocols**

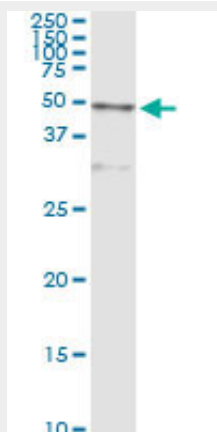
Provided below are standard protocols that you may find useful for product applications.

- [Western Blot](#)
- [Blocking Peptides](#)
- [Dot Blot](#)
- [Immunohistochemistry](#)
- [Immunofluorescence](#)
- [Immunoprecipitation](#)
- [Flow Cytometry](#)
- [Cell Culture](#)

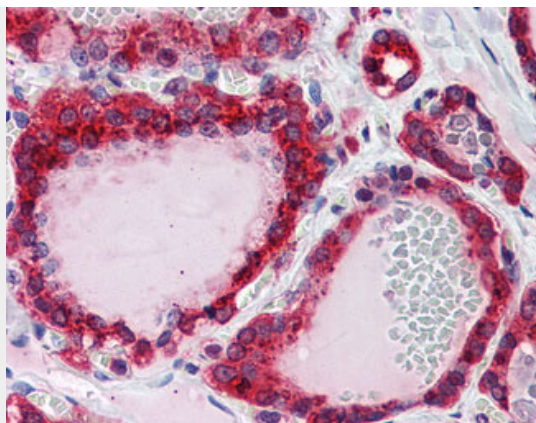
#### **CTSD / Cathepsin D Antibody (clone 3F12-1B9) - Images**



Western blot of CTSD expression in transfected 293T cell line by CTSD antibody.



Immunoprecipitation of CTSD transfected lysate using anti-CTSD monoclonal antibody and Protein A...



Anti-Cathepsin D antibody IHC of human thyroid.

#### **CTSD / Cathepsin D Antibody (clone 3F12-1B9) - Background**

Acid protease active in intracellular protein breakdown. Involved in the pathogenesis of several diseases such as breast cancer and possibly Alzheimer disease.

#### **CTSD / Cathepsin D Antibody (clone 3F12-1B9) - References**

- Faust P.L.,et al.Proc. Natl. Acad. Sci. U.S.A. 82:4910-4914(1985).  
Westley B.R.,et al.Nucleic Acids Res. 15:3773-3786(1987).  
Redecker B.,et al.DNA Cell Biol. 10:423-431(1991).  
Ebert L.,et al.Submitted (JUN-2004) to the EMBL/GenBank/DDBJ databases.  
Kalnine N.,et al.Submitted (OCT-2004) to the EMBL/GenBank/DDBJ databases.